

## Adding Camp Phillip information to your church's website

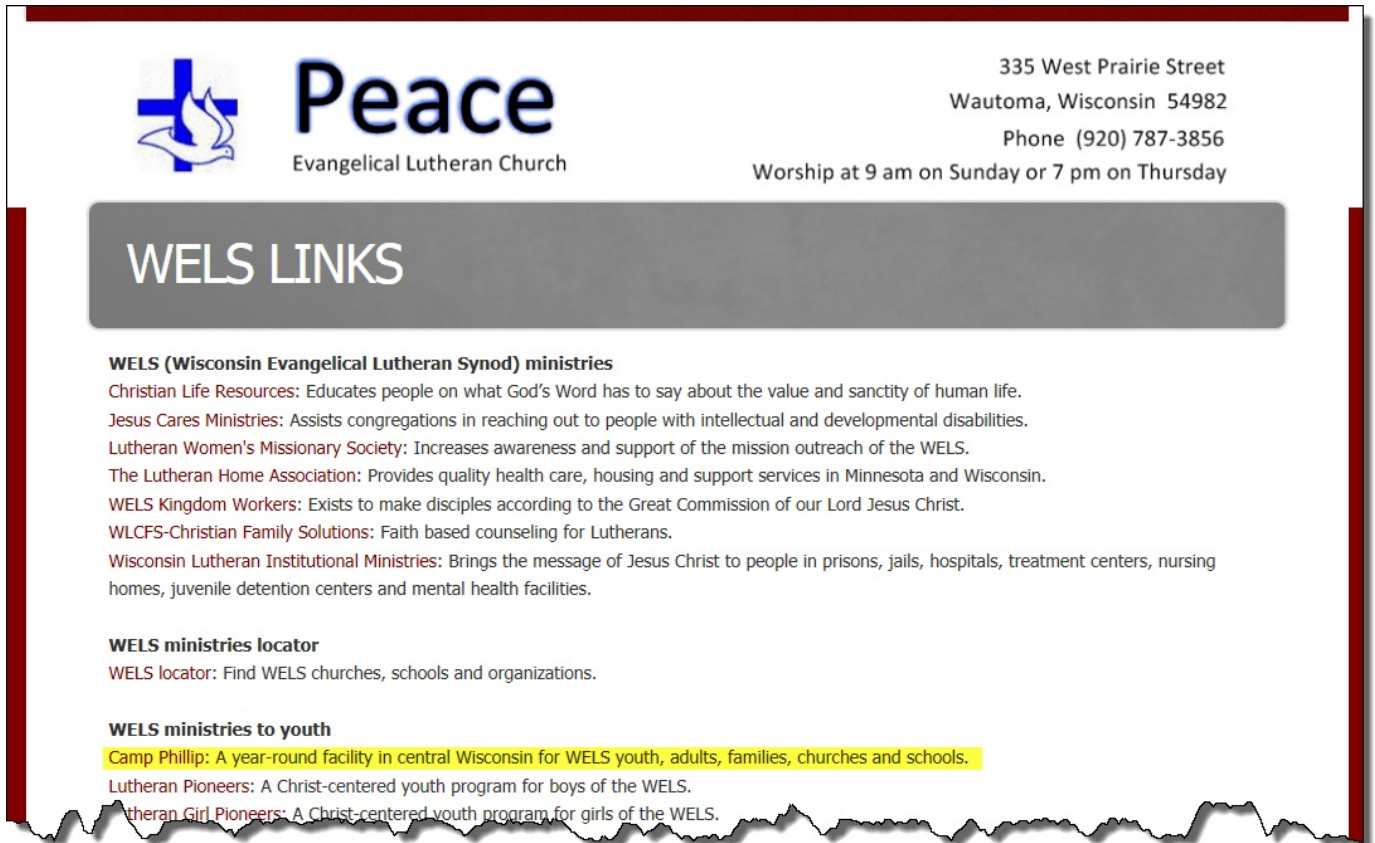
We would appreciate a mention of Camp Phillip on your church's website. You could accomplish this in a couple ways:


1. A link on your church's WELS links page.
2. A link on your church's website menu bar.

The explanations below come from websites using Finalweb--a website program used by many WELS churches.

### 1. A link on your church's WELS links page

Here is a sample from the [WELS links page](#) from Peace, Wautoma:



 **Peace**  
Evangelical Lutheran Church

335 West Prairie Street  
Wautoma, Wisconsin 54982  
Phone (920) 787-3856  
Worship at 9 am on Sunday or 7 pm on Thursday

## WELS LINKS

**WELS (Wisconsin Evangelical Lutheran Synod) ministries**

**Christian Life Resources:** Educates people on what God's Word has to say about the value and sanctity of human life.

**Jesus Cares Ministries:** Assists congregations in reaching out to people with intellectual and developmental disabilities.

**Lutheran Women's Missionary Society:** Increases awareness and support of the mission outreach of the WELS.

**The Lutheran Home Association:** Provides quality health care, housing and support services in Minnesota and Wisconsin.

**WELS Kingdom Workers:** Exists to make disciples according to the Great Commission of our Lord Jesus Christ.

**WLCFS-Christian Family Solutions:** Faith based counseling for Lutherans.

**Wisconsin Lutheran Institutional Ministries:** Brings the message of Jesus Christ to people in prisons, jails, hospitals, treatment centers, nursing homes, juvenile detention centers and mental health facilities.

**WELS ministries locator**

WELS locator: Find WELS churches, schools and organizations.

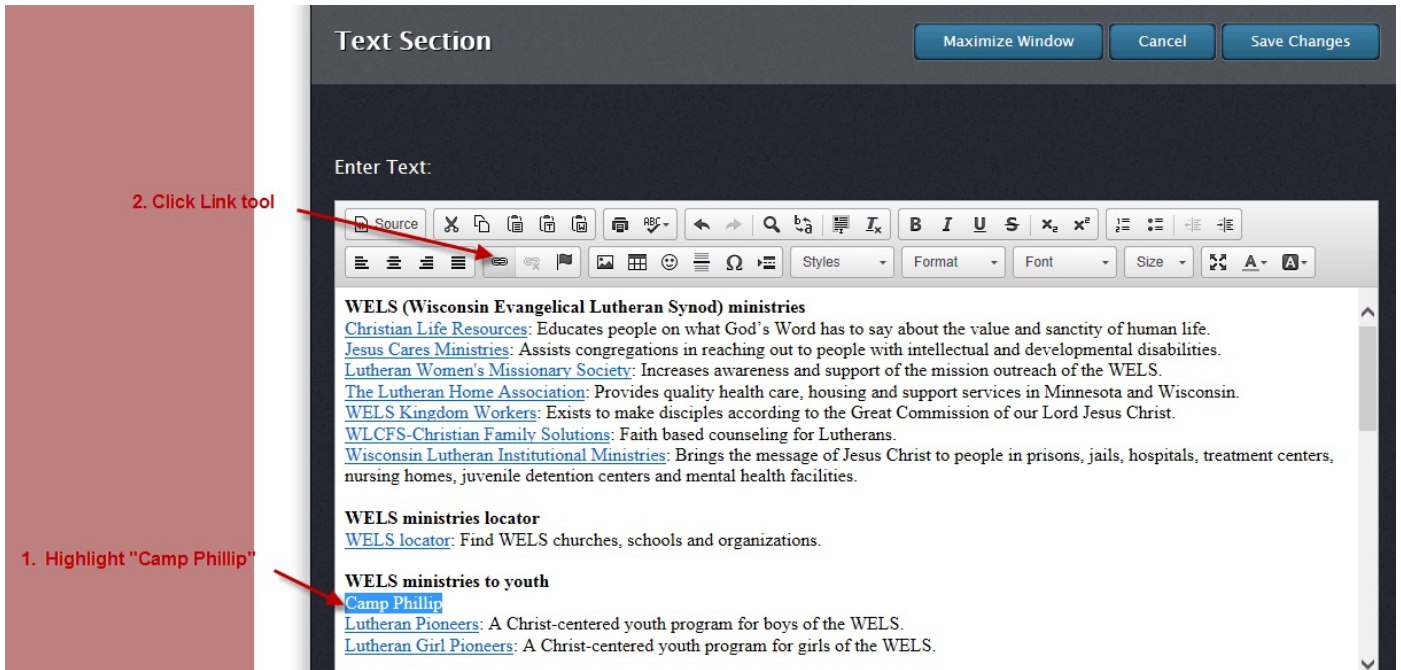
**WELS ministries to youth**

**Camp Phillip:** A year-round facility in central Wisconsin for WELS youth, adults, families, churches and schools.

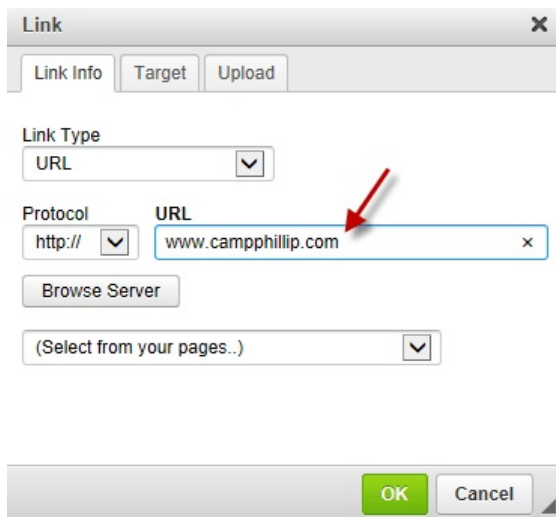
**Lutheran Pioneers:** A Christ-centered youth program for boys of the WELS.

**Lutheran Girl Pioneers:** A Christ-centered youth program for girls of the WELS.

To accomplish this you would type the words for which you would like to create the link, e.g. Camp Phillip. Highlight those words and click the Link tool.



The link box will pop up and you can type in the url of the website, e.g. www.campPhillip.com.



One other thing that you can do is to click the "Target" tab. On that page you can select the target as "New Window (\_blank)." That means that when the link is clicked it will open a new window so the original webpage is still open as is the link page.

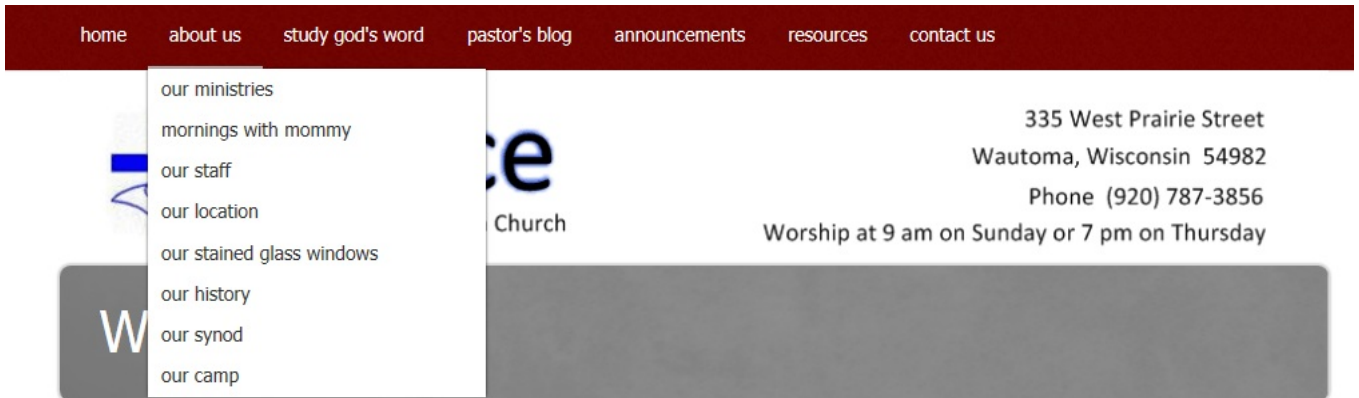
Click OK.

Then finish typing the rest of the words in the description line, e.g. "A year-round facility in central Wisconsin for WELS youth, adults, families, churches and schools."

Test out the link to make sure that it works properly.

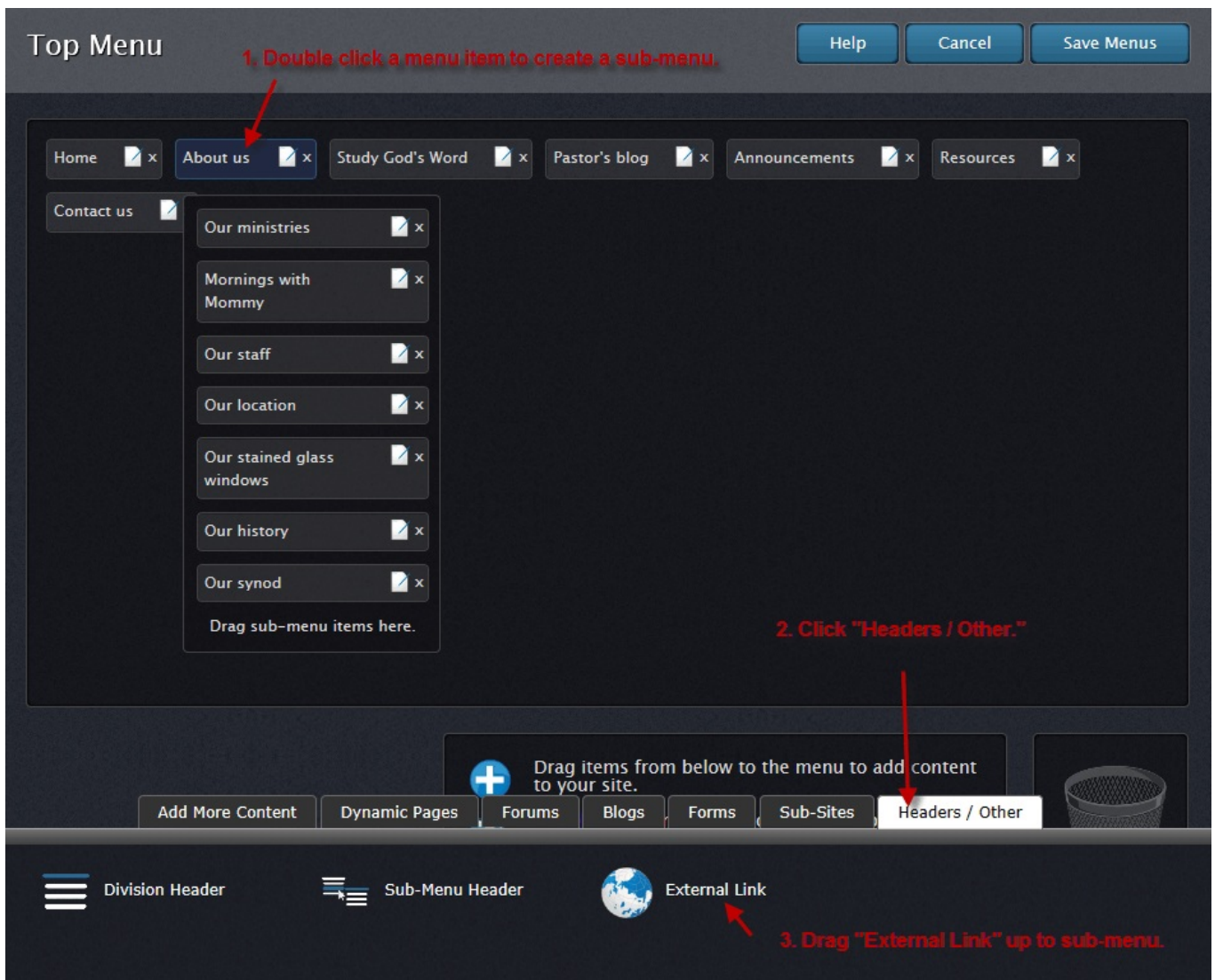
## 2. A link on your church's website menu bar

Here is a sample from the Peace, Wautoma, website:

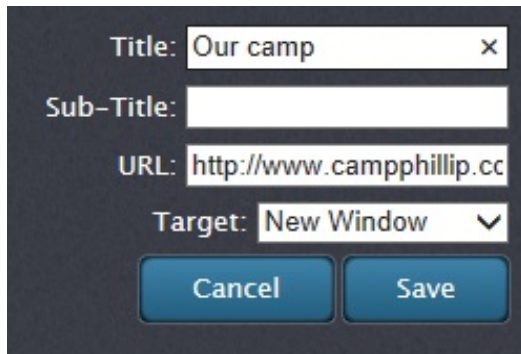


To accomplish this click "Edit Menu."

Double click a menu item to create a sub-menu. Click "Headers / Other." Drag "External Link" up to the sub-menu.



The External Link box appears. Type the title that you desire, e.g. Our camp. Type the appropriate url, e.g. <http://www.campphillip.com>. And select “New Window” as the Target. Click “Save.”



The image shows a dark-themed dialog box for adding an external link. It contains four input fields: 'Title' with the text 'Our camp', 'Sub-Title' which is empty, 'URL' with the text 'http://www.campphillip.cc', and 'Target' with a dropdown menu showing 'New Window'. At the bottom are two blue buttons labeled 'Cancel' and 'Save'.

Click “Save Menus.”

Test out the link to make sure it works properly.