

Hi Everyone!

It is time to pack up your sewing machine and get together to do some quilting! I am looking forward to some fun and fellowship with quilting friends young (I didn't like the word old) and new. I will bring directions for three projects. Following are the pictures, supply lists and some cutting directions should you wish to get some cutting done before the retreat. Enjoy the gorgeous blanket of snow, warm and safe with your sewing machine by your side! See you soon.

Pam

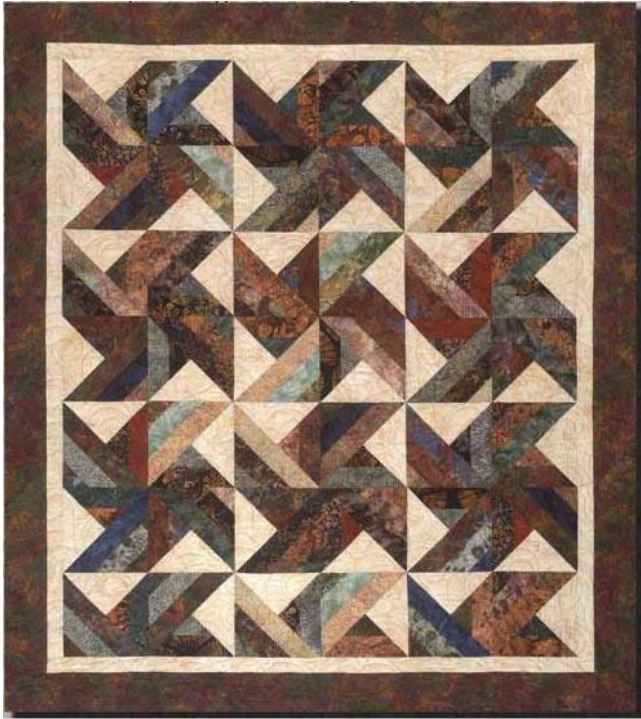
### **Papillon Jardin**



Supplies for 61" x 77" quilt:

- ◆ Fabric A & G (smaller squares and rectangles) 1/3 yard each
- ◆ Fabric B & E (large squares, small squares and rectangles) 3/4 yard each
- ◆ Fabrics C, F, I and J (medium squares, small squares and rectangles) 1/2 yard each
- ◆ Fabric D (wider frames of medium squares) 3/8 yard
- ◆ Fabric H (frames for small squares, inner border, corner blocks and binding) 1 3/8 yard
- ◆ Fabric K (outer border) 1 1/4 yard
- ◆ Backing 4 yards
- ◆ Quilt shown is with Papillon Fabrics by Hoffman in Cream and Teal, I used the Chocolate fabric line by Red Rooster Fabrics. You can use any 11 fabrics that coordinate well (many of your stash fabrics will probably work). You will need a large variety of fabrics so that like fabrics are not next to each other in the final layout.
- ◆ Masking tape to label each fabric A – K as you cut them out (keeping them organized is the key to easily piecing this quilt.)
- ◆ Cutting:
  - A&G: 4 rectangles 4 1/2" x 6 1/2", 4 squares 4 1/2"
  - B&E: 2 squares 12 1/2", 4 rectangles 4 1/2" x 6 1/2", 4 squares 4 1/2"
  - C,F,I,J: 5 squares 6 1/2", 4 rectangles 4 1/2" x 6 1/2", 4 squares 4 1/2"
  - D: 4 strips 2 1/2" wide cut into 8 strips 10 1/2" long and 8 strips 6 1/2" long
  - H: 24 strips 1 1/2" x 6 1/2" (can be cut from a 6 1/2" x 42" strip), 24 strips 1 1/2" x 4 1/2" (can be cut from one 4 1/2" x 42" strip), 7 binding strips 2 1/2" wide, 6 border strips 1 1/2" wide, 4 squares 7"
  - K: 6 border strips 6" wide

## Trade Winds Quilt



Supplies to make one 63" x 78" quilt:

- ◆ Note that the supplies required will complete one more row of blocks than pictured here – there will be four rows of pinwheels, not three and one half)
- ◆ 42 strips 2 1/2" wide (a "Bali Pop" works great for this or a jelly roll)
- ◆ 1 yard background fabric – cut 6 4 1/2" strips for blocks
- ◆ 5/8 yard inner border (shown same as background fabric) – cut 6 strips 2 1/2" for inner border
- ◆ 1 1/4 yard outer border fabric – cut 8 strips 4 1/2"
- ◆ 4 yards backing fabric
- ◆ 5/8 yard binding fabric – cut 8 strips 2 1/2"
- ◆ If you have one, bring a "Strip Tube Ruler" (triangle shaped), otherwise a 9 1/2" square ruler will do. You will need one or the other of these to easily complete this quilt.
- ◆ Masking tape

## Reversible Quilt as You Go Napkins, Placemats and Hot Pads



Yardage measurements given make 4 of each:  
Placemats, Napkins and Hot Pads

Fabric –

For each side you will need:

- 1 1/3 yards of multi-print for placemat centers, placemat borders, and hot pad centers
- 1/2 yard of tone on tone of a color that is in the multi-print (strips around the centers on placemat and hot pad)
- 2/3 yard of another tone on tone color that is in the multi-print for other strips around the centers
- 1 yard of tone on tone for napkins (could be the same fabric as one of the two above)
- For two sided binding you will need 1/2 yard of fabric for each side
- For one color binding you will need 7/8 yard of a fabric that will look good on both sides of placemat and hot pad
- 20" ribbon for napkin ring – one for each side of placemat

Remember, this is the yardage needed for each side of placemat, napkin and hot pad – you will need this much fabric for each side. One set for one side, one set for the other side. There may be fabric left over, depending on what colors are chosen for the solid side of the hot pad and whether double sided binding or single colored binding is used.

Batting –

- 3/4 yard 90" wide cotton batting or assorted pieces of cotton batting left over from other projects
- 8 - 10" squares or 40" x 20" piece of insulbright (heat resistant batting)

Other items needed –

- Cotton thread to match all fabrics
- Walking foot for sewing machine
- 505 spray adhesive
- Rotary cutting mat, ruler and 45mm cutter
- Fabric marking pen that will show up on multi-print

Cutting for this project is a bit lengthy, but the project goes together very quickly!

#### Four Hot Pads

- cut 4 pieces 10" square of multi print chosen for side A of placemat
- cut 4 pieces 5" square of multi print chosen for side B of placemat
- cut 8 pieces 5" square of tone on tone chosen for side B of placemat
- cut 8 pieces 5 x 10 of other tone on tone chosen for side B of placemat
- cut 4 pieces 1 1/8 x 44 from multi print for side A (binding)
- cut 4 pieces 1 1/2 x 44 from multi print for side B (binding)
- cut 4 pieces 10" square of cotton batting and 8 pieces 10" square of insulbright (hot pad batting)

#### Four Napkins

- cut 4 16 1/2" squares of fabric for each side

Four Placemats – cut one **set** of the following for side side A of placemats and one **set** for side B of placemats (all in inches):

- cut 4 pieces 5 x 8 from multi print center & border fabric
- cut 8 pieces 4 x 8 from tone on tone strip fabric
- cut 8 pieces 4 x 11 from next tone on tone strip fabric
- cut 8 pieces 4 x 14 from multi print center & border fabric
- cut 8 pieces 4 x 17 from multi print center & border fabric
- cut 4 4 x 7 from batting
- cut 8 batting 3 x 7
- cut 8 batting 3 x 10
- cut 8 batting 3 x 13
- cut 8 batting 3 x 16
- cut 4 ribbon pieces 5" long

#### Placemat Bindings

- cut 8 strips 1 x 44 from multi print fabric for binding on side B of placemat
- cut 8 strips 1 3/8 from multi print fabric for binding on side A of placemat

OR

- Cut 8 strips 2 1/2" of one fabric if you plan to use the same color binding on both sides